

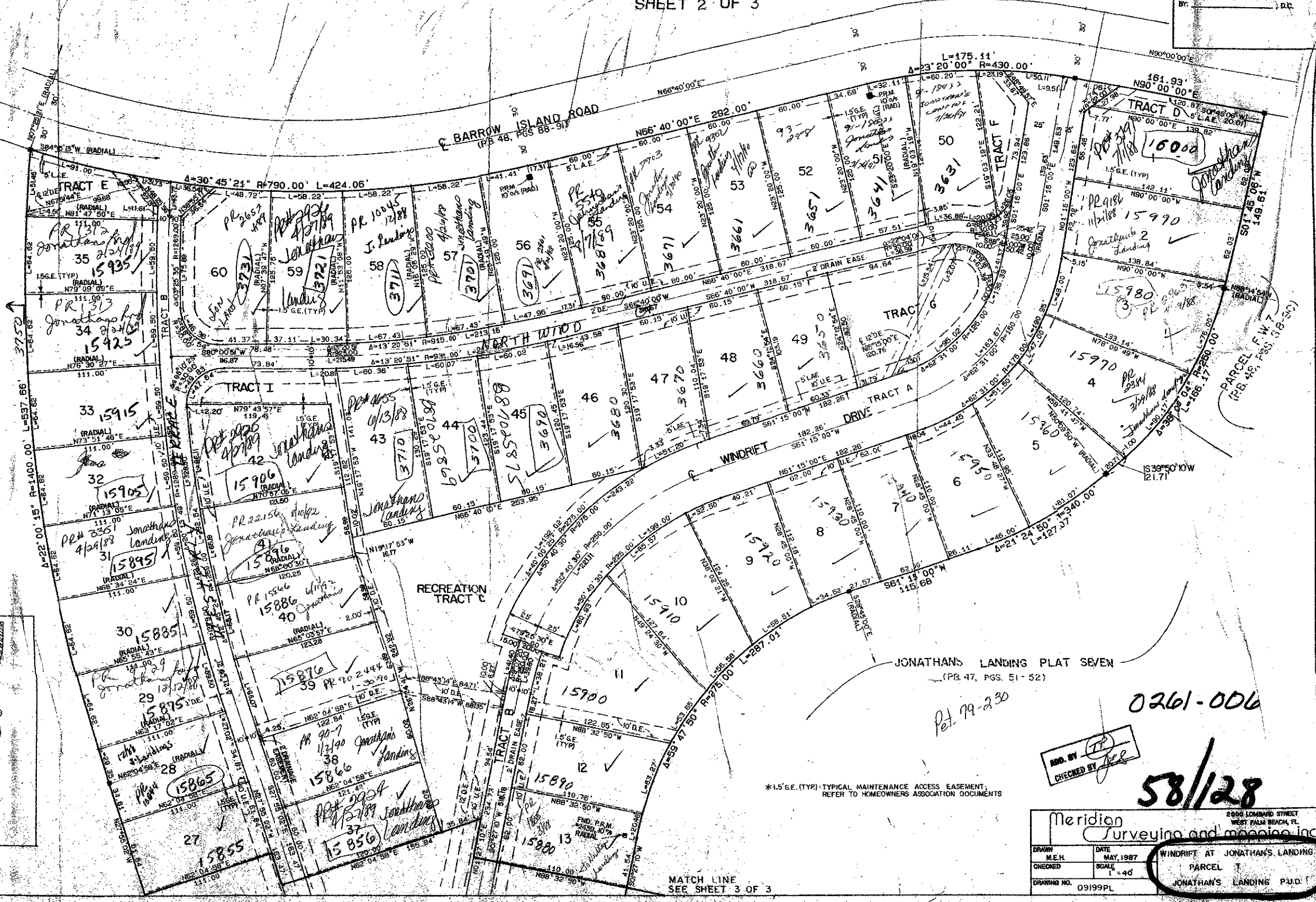
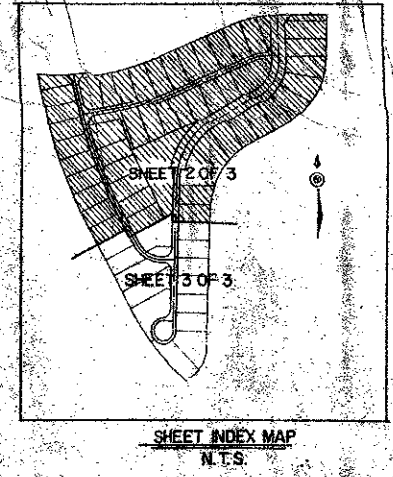
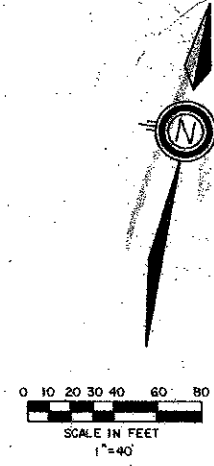
WINDRIFT AT JONATHAN'S LANDING P.U.D.

128

PART OF JONATHAN'S LANDING P.U.D.
BEING A REPLAT OF PARCEL T OF "JONATHAN'S LANDING, PLAT EIGHT, P.U.D."
SITUATE IN SECTION 7, TOWNSHIP 41 SOUTH, RANGE 43 EAST
PALM BEACH COUNTY, FLORIDA

SHEET 2 OF 3

STATE OF FLORIDA
COUNTY OF PALM BEACH
THIS PLAT WAS FILED FOR
RECORD
THIS ... DAY OF ...
A.D. 1987 AND DULY RECORDED
IN PLAT BOOK ... ON PAGES
AND ...
JOHN B. DUNKLE, CLERK
D.C.



DRAWING NUMBER
58/128

DRAWING NUMBER

DRAWING NUMBER

DRAWING NUMBER

SUBDIVISION	Jonathan's Landing
BOOK	15895
QUAD	11
SE	21F ZONE
PUD NAME	Jonathan's Landing

Pet. 99-230

0261-006

ADD. BY
CHECKED BY

58/128

*1/2" G.E. (TYP.) TYPICAL MAINTENANCE ACCESS EASEMENT.
REFER TO HOMEOWNERS ASSOCIATION DOCUMENTS

Meridian
Surveying and Mapping, Inc.

DRAWN	M.E.H.	DATE	MAY 1987
CHECKED	BOAL	SCALE	1"=40'
DRAWING NO.	09199PL	WINDRIFT AT JONATHAN'S LANDING PARCEL T JONATHAN'S LANDING P.U.D.	